



LOOKING FOR INTEGRATED SUPPORTIVE HOUSING?

At THE MEWS, an income based affordable housing community, individuals with intellectual and developmental disabilities can live independently and fully integrated into the community in an apartment of their own. The apartment units are uncertified but Abilities First offers Community Habilitation supports, if needed, to assist individuals to help meet their personal goals and engage in their environment. This opportunity may be ideal for someone who is moving out of a group or family's home.



THE MEWS AT HOPEWELL JUNCTION

BEAUTIFUL, ONE & TWO BEDROOM APARTMENTS AVAILABLE

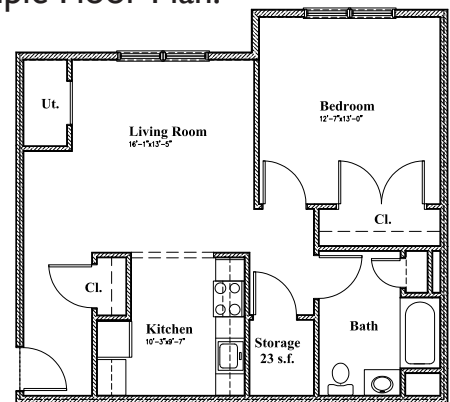
NEW CONSTRUCTION IN PEACEFUL SETTING | MODERN & SPACIOUS | ENERGY EFFICIENT DESIGNED

Located at Cannon Lane & NY 376, Near Rt. 82, Hopewell Junction, Dutchess County, NY (Across from East Fishkill Town Hall and Hopewell Hose Fire Company #1)

AMENITIES INCLUDE:

- Close to Retail, Public Transportation & Recreation
- On-site Management & Property Superintendent
- On-site Laundry Facilities, Ample Storage, Eat-in Kitchen
- Central Air Conditioning
- Wired for Cable, Internet & Phone Connectivity
- Mobility and/or Audio Visually Adapted Units Available
- Internet Café, Community Room, Lounge/Television Room
- On-site Parking , Walkways, Patio/Picnic Area, Playground
- Water, Garbage and Sewer Included

Sample Floor Plan:



1 Bedroom Apt.
745 s.f.

Must be eligible for ISS grant and an income less than \$18,780 for one bedroom and less than \$21,480 for two bedroom. Staffing supports available as needed. OPWDD financial rental assistance available for enrollees.

For more information or to apply, contact Jodi Cox-Kyle, Director of At Home Services at 845.485.9803 ext. 229 or jodicox@abilitiesfirstny.org.

